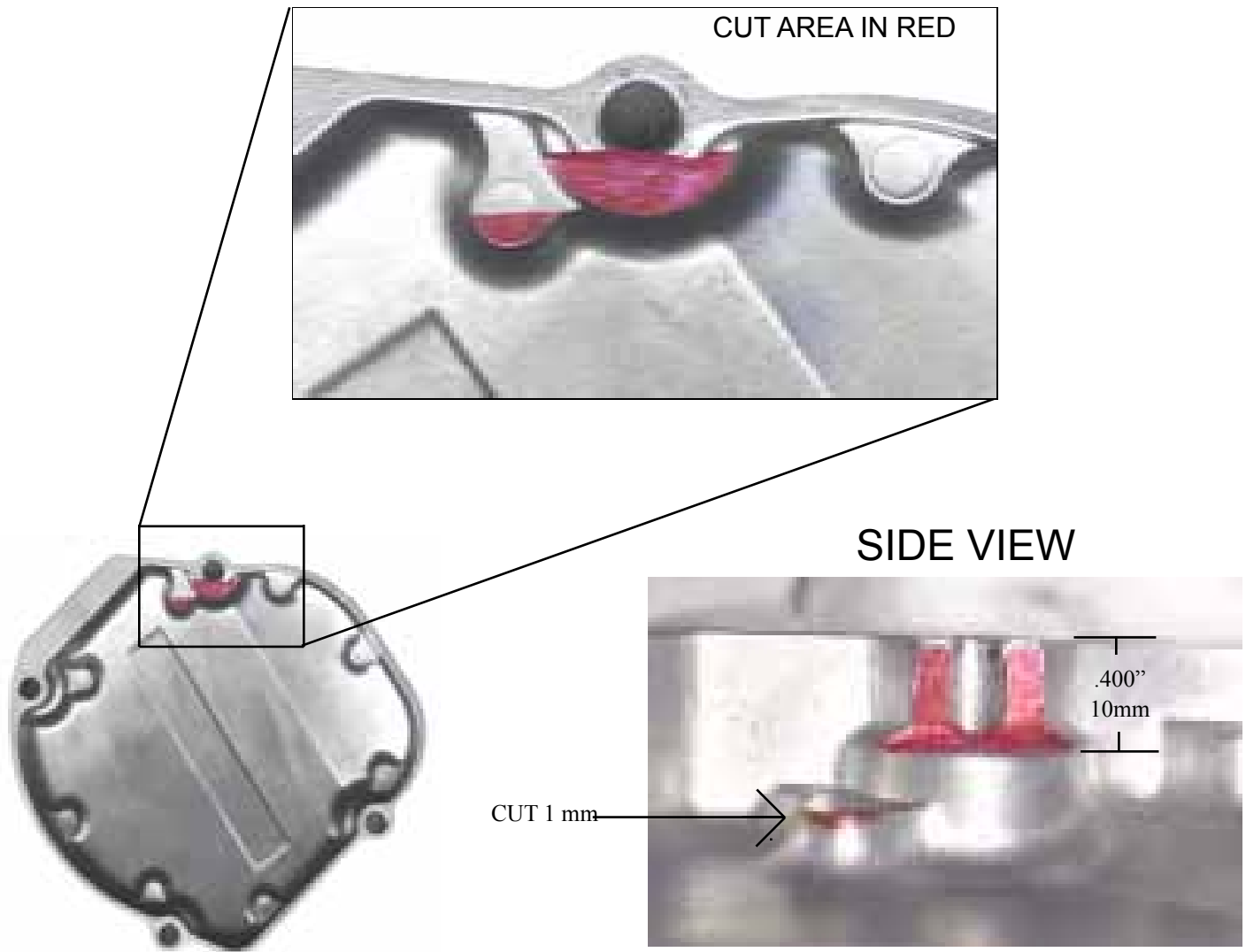


SPECIAL INSTRUCTIONS FOR CR 250 2002-2007

Cover Modification for part numbers 511, 511H, and 514H

On the 2002 to 2007 CR 250 the engine cases and cover are very close to the flywheel, and in order to get a significant amount of flywheel weight, and get it out and away from the center of the rotating mass where it will do some good, it is necessary to grind or cut a piece out of the ignition cover.

Cut or grind a piece from the inside of the stock ignition cover as shown in the diagram below. The best tool to use is a hand held die grinder with a cut off wheel. A course file or a hack saw blade will also work. It helps a lot to carefully clamp the cover in a vice using a rag or other soft clamping surface. **WEAR EYE PROTECTION.**



Now that you have cut the cover you also have to cut the gaskets to match. Use the sealing washer (included in the flywheel weight kit) on the cover bolt that goes through the cut area. The 12 ounce weight for the 2002 CR 250 (part number 511) requires using an extra gasket (two gaskets). The 14 ounce weight for the 2002 model and the 12 ounce weight for the 2003-2007 model (part numbers 511H or 514H) requires using two gaskets, one on each side of the supplied 1/8th inch plastic cover spacer.

Make sure that the flywheel weight does not rub on the cover, gaskets, or engine case. Keep in mind that you need enough clearance to allow for heat expansion and the cover getting pushed and bumped while riding. Take the cover back off after kicking the engine through and check for rubbing. Grind the cover or cases as necessary. Check again after a 20 minute ride and check the set screws on the flywheel weight while you are at it.